



PONY EXPRESS TRL

**STORAGE UNITS**  
**POUDRE VALLEY CO-OP**  
**AULT, COLORADO**

**DESIGN ASSOCIATES**  
 214 E. 1ST ST. BACOKA, NE 68011 | 308.342.2270 | ENGINEERS / ARCHITECTS  
 207 W. 7th St. HASTINGS, NE 68901 | 402.452.2771 | WWW.DESIGNASSOCIATES.COM

© COPY RIGHT  
 This document and the information contained hereon are the property of Design Associates. No part of this document may be reproduced or transmitted in any form or by any means, electronic, mechanical, photocopying, recording, or by any information storage and retrieval system, without the prior written permission of Design Associates. All rights reserved.

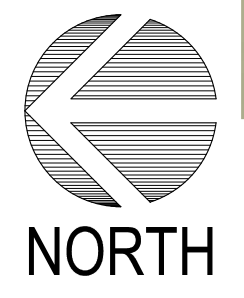
Seal of Coordinating Professional:  
**PRELIMINARY**  
**NOT FOR CONSTRUCTION**

DWG: 887-23 STAGE 2 STUNT

DRAWN:	AJW
CHECKED:	
REVISIONS:	

**C-1**

DATE: FEB., 2023

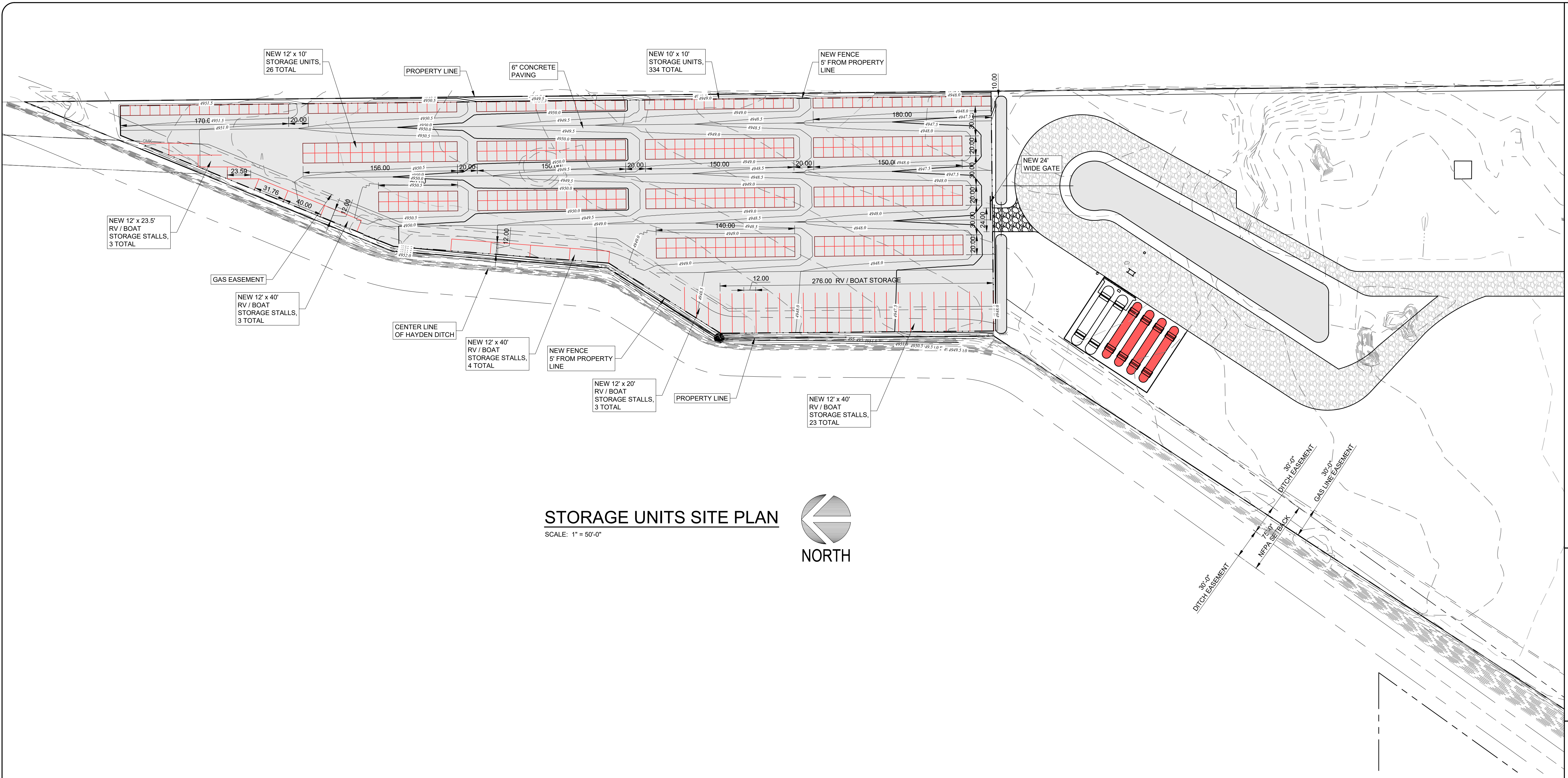


**SITE PLAN**  
 SCALE: 1" = 60'-0"

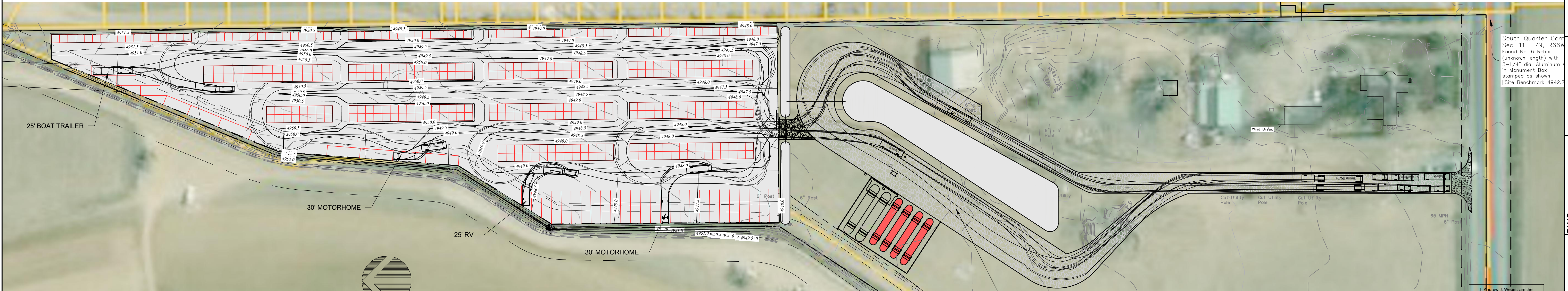
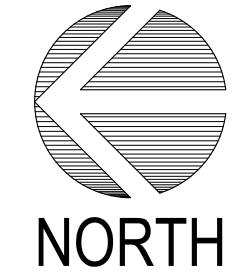
I, Andrew J. Weber, am the  
 Coordinate Professional on the  
 Proposed Storage Units project.

This bar is one inch long on original drawing.  
 If not one inch on this sheet, adjust scales accordingly.





**STORAGE UNITS SITE PLAN**  
SCALE: 1" = 50'-0"



**TRAFFIC PLAN**  
SCALE: 1" = 60'-0"



**STORAGE UNITS**  
**POUDRE VALLEY CO-OP**  
**AULT, COLORADO**

**DESIGN ASSOCIATES**  
214 E. 1ST ST., BROOMFIELD, CO 80016  
303.434.2270 | 303.434.2271 | WWW.DESIGNASSOCIATES.COM

© COPY RIGHT  
This document and the information contained herein may not be reproduced or transmitted in any form or by any means, electronic or mechanical, including photocopying, recording, or by any information storage and retrieval system, without the prior written permission of the copyright owner.

Seal of Coordinating Professional:

**PRELIMINARY**  
**NOT FOR CONSTRUCTION**

DWG: 887-25 STAGE 2 STUNT
DRAWN: AJW
CHECKED:
REVISIONS:

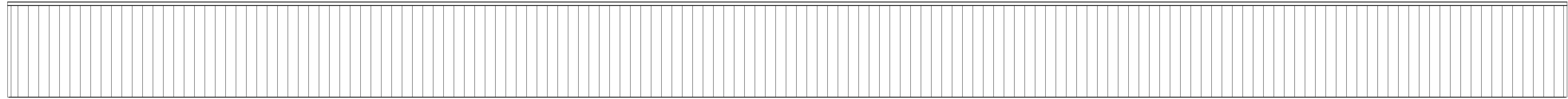
**C-2**

DATE: FEB., 2023

South Quarter Cor. Sec. 11, T7N, R66W  
Found No. 6 Rebar  
(Unknown length) with  
3-1/4" dia. Aluminum  
in Monument Box  
stamped as shown  
[Site Benchmark 4942.7]

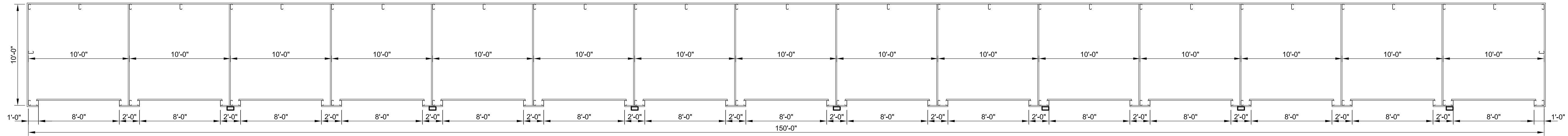
I, Andrew J. Weber, am the  
Coordinating Professional on the  
Proposed Storage Units project.  
This bar is one inch long on original drawing.  
If not one inch on this sheet, adjust scales accordingly.





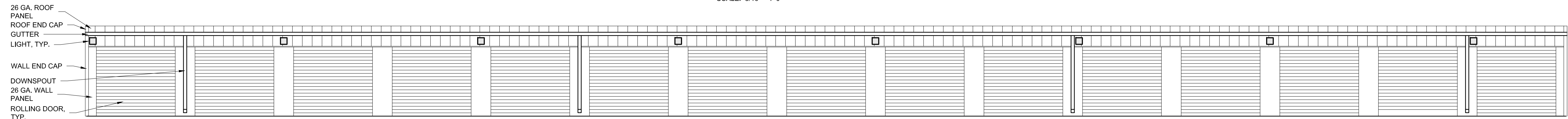
**SINGLE BACK ELEVATION**

SCALE: 3/16" = 1'-0"



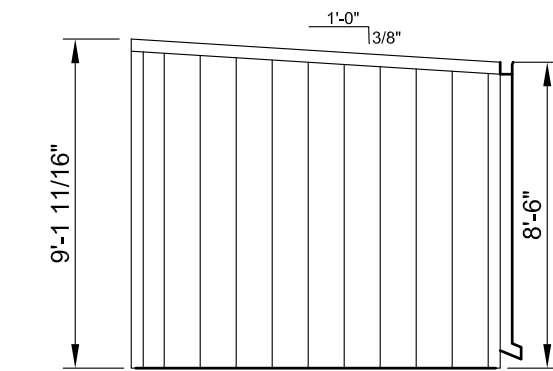
**SINGLE UNIT PLAN**

SCALE: 3/16" = 1'-0"



**SINGLE FRONT ELEVATION**

SCALE: 3/16" = 1'-0"



**SINGLE SIDE ELEVATION**

SCALE: 3/16" = 1'-0"

**STORAGE UNITS**  
**POUDRE VALLEY CO-OP**  
**AULT, COLORADO**

**DESIGN ASSOCIATES**

24 E. 1ST ST. BACOK, NE 68011 (303) 442-2770 (ENGINEERS) ARCHITECTS  
 202 W. 7th St. HASTINGS, NE 68901 (402) 452-3771 (WWW.DESIGNASSOCIATES.COM)

© COPY RIGHT  
 This document and the information contained herein may not be reproduced or transmitted in any form or by any means, electronic or mechanical, including photocopying, recording, or by any information storage and retrieval system, without the prior written permission of the copyright owner.

Seal of Coordinating Professional:

**PRELIMINARY**  
**NOT FOR CONSTRUCTION**

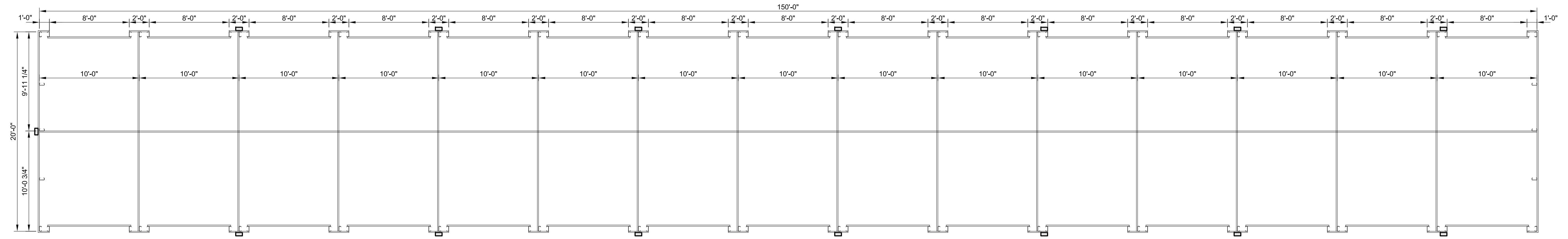
DWG: 887-23 A-1 STUNTS
DRAWN: AJW
CHECKED:
REVISIONS

**A-1**

DATE: FEB., 2023

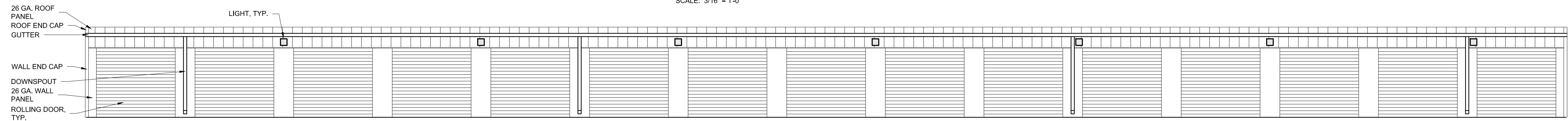
I, Andrew J. Weber, am the  
 Coordinating Professional on the  
 Proposed Storage Units project.

This bar is one inch long on original drawing.  
 If not one inch on this sheet, adjust scales accordingly.



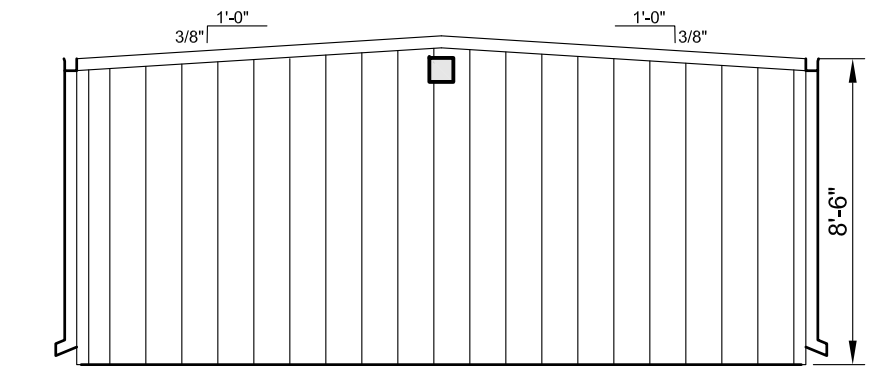
**DOUBLE 10'X10' UNIT PLAN**

SCALE: 3/16" = 1'-0"



**DOUBLE FRONT ELEVATION**

SCALE: 3/16" = 1'-0"



**DOUBLE SIDE ELEVATION**

SCALE: 3/16" = 1'-0"

**STORAGE UNITS**  
**POUDRE VALLEY CO-OP**  
AULT, COLORADO

**DESIGN ASSOCIATES**

24 E. 1ST ST. BACOK, NE 68601 | 308.342.2375 | ENGINEERS/ARCHITECTS  
203 W. 7th St. HASTINGS, NE 68601 | 402.452.3277 | WWW.WEBSIDEA.COM

© C.O.P.A. B.L.O.G.I.T.  
This document and the information contained herein may not be reproduced or  
transmitted in any form or by any means, electronic, mechanical, photocopying,  
recording, or otherwise, without the prior written permission of the  
copyright holder.

Seal of Coordinating Professional:

**PRELIMINARY**  
**NOT FOR CONSTRUCTION**

DWG: 887-23 A-1 STUNTS

DRAWN: AJW

CHECKED:

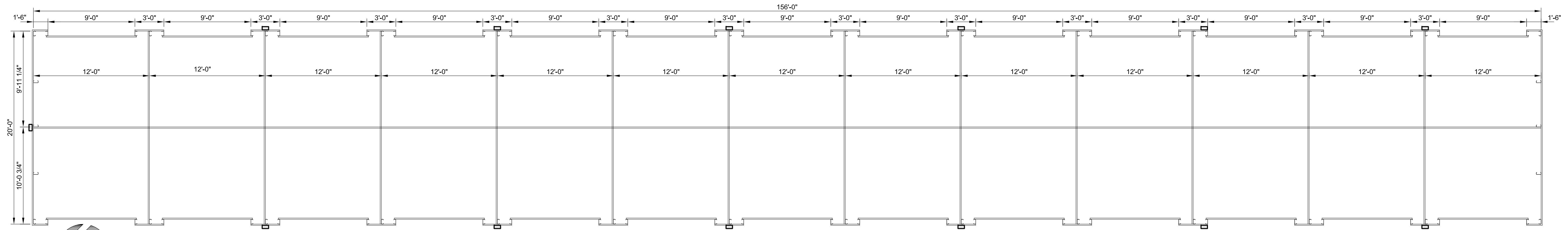
REVISIONS

**A-2**

DATE: FEB., 2023

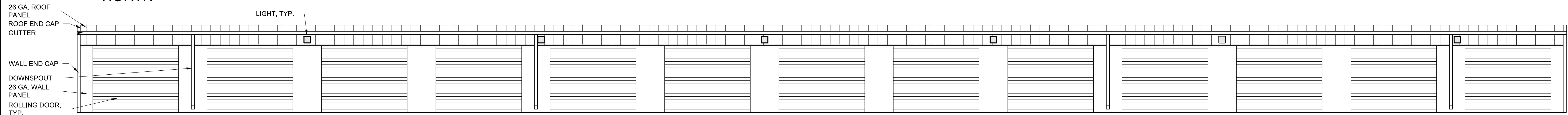
I, Andrew J. Weber, am the  
Coordinating Professional on the  
Proposed Storage Units project.

This bar is one inch long on original drawing.  
If not one inch on this sheet, adjust scales accordingly.



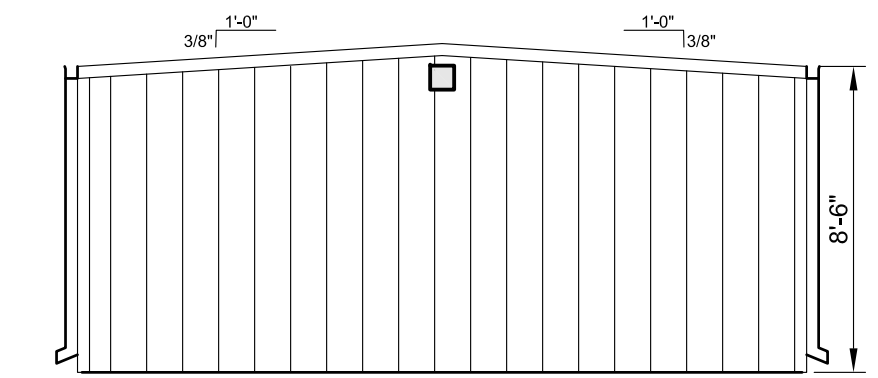
**DOUBLE 12'X10' UNIT PLAN**

SCALE: 3/16" = 1'-0"



**DOUBLE FRONT ELEVATION**

SCALE: 3/16" = 1'-0"



**DOUBLE SIDE ELEVATION**

SCALE: 3/16" = 1'-0"

**STORAGE UNITS**  
**POUDRE VALLEY CO-OP**  
 AULT, COLORADO

**DESIGN ASSOCIATES**  
 214 E. 1ST ST. WACONIA, NE 68081 | 308.342.2378 | ENGINEERS ARCHITECTS  
 203 W. 7th St. HASTINGS, NE 68901 | 402.452.3277 | WWW.DESIGNASSOCIATES.COM

© COPY RIGHT  
 This document and the information contained hereon may not be reproduced or transmitted in any form or by any means, electronic or mechanical, including photocopying, recording, or by any information storage and retrieval system, without the prior written permission of the copyright owner.

Seal of Coordinating Professional:

**PRELIMINARY**  
**NOT FOR CONSTRUCTION**

DWG: 887-23 A-1 STUNTS
DRAWN: AJW
CHECKED:
REVISIONS

**A-3**

DATE: FEB., 2023

I, Andrew J. Weber, am the  
 Coordinating Professional on the  
 Proposed Storage Units project.

This bar is one inch long on original drawing.  
 If not one inch on this sheet, adjust scales accordingly.